

Document → Style → article
 Document → Language → English
 Document → Page → Type → Paper
 Document → Page → Size → A4

Document → View → Informative flags → Detailed
 Document → View → Page layout → Show header and footer
 Document → View → Page layout → Margins as on paper

Text → Title → Insert title

TEX_{MACS} Quick-Start Guide

Nicolas Ratier


Institut FEMTO-ST, département LPMO, CNRS UMR 6174
 32 avenue de l'Observatoire, F-25044 Besançon, France

Email: nicolas.ratier@lpmo.edu


Web: www.lpmo.edu/~ratier

Text → Title → Abstract


This quick-start guide is a résumé of TEX_{MACS} commands used to write scientific paper. Most commands are available by 4 different ways: from the menu entries, by keyboard shortcuts, by L^ATEX-like keyboard inputs and by icons.

Text → Section → Section A-1 $\langle \backslash section \rangle$ 

1. Section

Text → Section → Subsection A-2 $\langle \backslash subsection \rangle$ 


1.1. SUBSECTION

Text → Section → Subsubsection A-3 $\langle \backslash subsubsection \rangle$ 

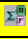
1.1.1. SUBSUBSECTION

Insert → Mathematics → Formula \$ 

Example of inline formula: $\sin(x)^2 + \cos(x)^2 = 1$.



Insert → Mathematics → Equation	A-\$	
Mathematics → Number equation	A-*	
Mathematics → Remove number	A-*	

$$\frac{d^2 x^\beta}{d\lambda^2} + \Gamma_{\mu\nu}^\beta \frac{dx^\mu}{d\lambda} \frac{dx^\nu}{d\lambda} = 0 \tag{1}$$

Insert → Mathematics → Equations	A- $\&$	
Mathematics → Number equation	A-*	
Mathematics → Remove number	A-*	

$$f_{m,n} = \frac{1}{MN} \sum_{u=0}^{M-1} \sum_{v=0}^{N-1} F_{u,v} \exp \left[2i\pi \left(\frac{mu}{M} + \frac{nv}{N} \right) \right] \quad (2)$$

$$F_{u,v} = \sum_{m=0}^{M-1} \sum_{n=0}^{N-1} f_{m,n} \exp \left[-2i\pi \left(\frac{mu}{M} + \frac{nv}{N} \right) \right] \quad (3)$$

Insert → Image → Big figure	
Insert → Image → Insert image...	

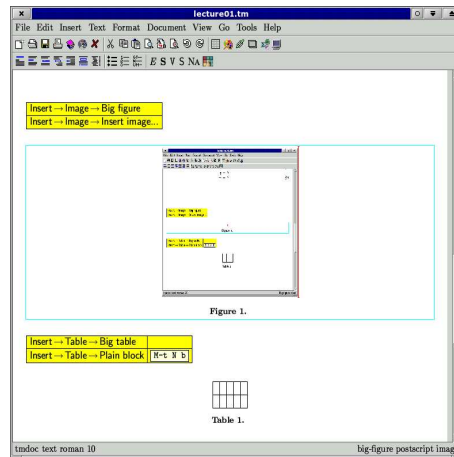




Figure 1. Part of T_EX_{MACS} Quick-Start Guide

Insert → Table → Big table		<input type="checkbox"/>
Insert → Table → Plain block	M-t N b	<input type="checkbox"/>

eps	tif	pdf	pdm
gif	ppm	xpm	fig

Table 1. Image file formats currently recognized by T_EX_{MACS}

Insert → Link → Label	M-!	$\langle \langle label \rangle \rangle$	
Insert → Link → Reference	M-?	$\langle \langle ref \rangle \rangle$	

Reference to sub-subsection 1.1.1, to Eq. (2), to Fig. (1) and to Table 1.

Insert → Link → Citation → Visible	$\langle \langle cite \rangle \rangle$
Insert → Link → Citation → Invisible	$\langle \langle nocite \rangle \rangle$

Reference to citation [1] and invisible citation.

Text → Automatic → Bibliography...
Document → Update → Bibliography

Bibliography

- [1] X1. Author. Title of the paper. *International Journal of Science and Technology*, X(X):XX-XX, 19XX.
 [2] X2. Author. *Title of the Book*. Publishing House, 19XX.